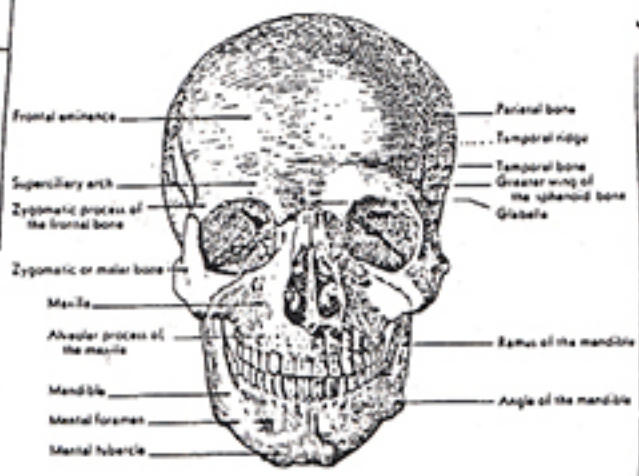


The stylized and relaxed structure

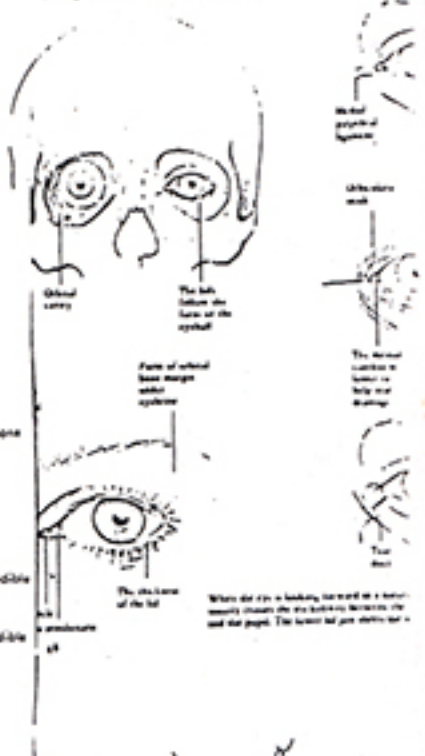


Fig. 2 ANTERIOR VIEW OF SKULL



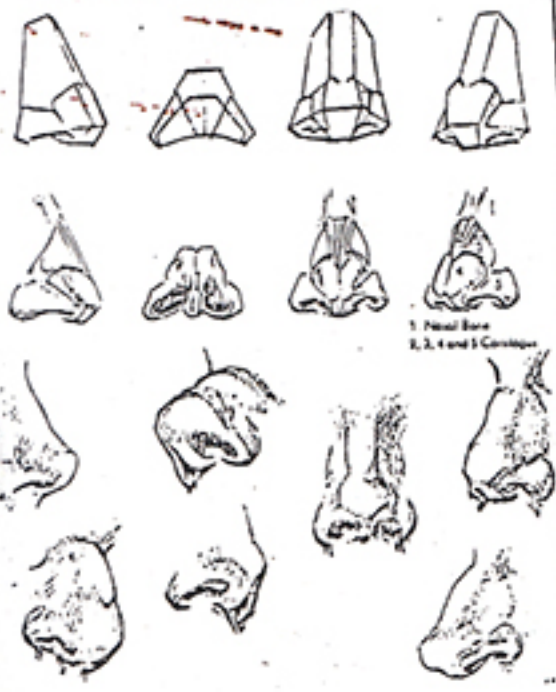
- Frontal eminence
- Superciliary arch
- Zygomatic process of the frontal bone
- Zygomatic or malar bone
- Mandible
- Alveolar process of the maxilla
- Mandible
- Mental foramen
- Mental tubercle
- Parietal bone
- Temporal ridge
- Greater wing of the sphenoid bone
- Glabella
- Ramus of the mandible
- Angle of the mandible

THE SKULL



THE NOSE

Here are a few of the various shapes and sizes. The shape and proportions of the nose are somewhat distinctive characteristics of every face, so if you want to draw a good likeness, take great pains in drawing the nose accurately.



1. Nasal Bone
2, 3, 4 and 5. Cartilage

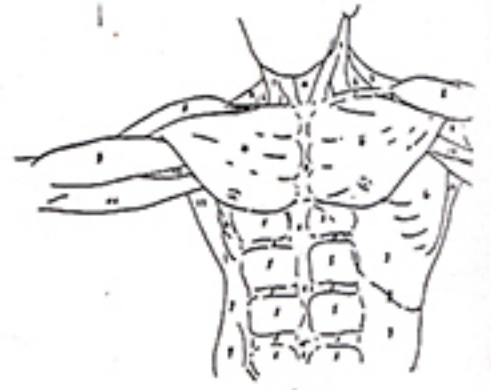
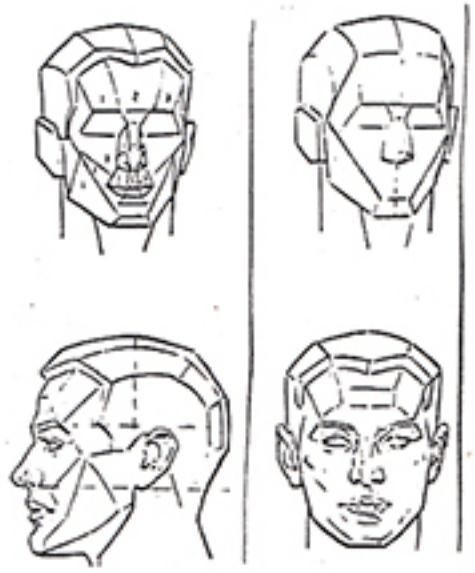


Fig. 3

- 1. Sternocleidomastoid muscle
- 2. Trapezius muscle
- 3. Cervicohumeral muscle
- 4. Pectoralis major muscle
- 5. Pectoralis minor muscle
- 6. Serratus anterior muscle
- 7. External oblique muscle
- 8. Diaphragm
- 9. Rectus abdominis muscle
- 10. Inguinal ligament
- 11. Triceps muscle
- 12. Carotid sheath muscle
- 13. Sclerous sterni muscle
- 14. Pons between the two heads of the sternocleidomastoid muscle
- 15. Medial trapezius of the neck
- 16. Lateral trapezius of the neck
- 17. Medial trapezius of the neck (darker green)
- 18. Sternum
- 19. Lower ribs
- 20. Transverse intercostal muscle
- 21. Inferior thoracic margin

